



 **Gustin Seed
Services**
Est. 1981

**Todd Gustin
740-572-6447**

**Doug Coe
740-505-0350**

Good luck to all Fair exhibitors!

exhibition—proof of age is the burden of the exhibitor or exhibitor's immediate family. Dogs not meeting age requirements cannot be shown.), Brace and Team with 1 or 2 of the same 2 project dogs. Dogs shown in Brace must be the 4-H member's project dogs.

4-H Project Book 201W (Working Dogs) - Include assistance dogs like Pilot Dogs, Canine Companions and other service dog organizations.

GUIDELINES

- 4-H members must be enrolled in the correct project and level; 201S Showmanship, 201O Dog Obedience, ALL 4-H members taking a Dog Project are required to complete the Dog Skillathon.
- Dogs must be owned either by the 4-H member or a member of their immediate family no later than April 1, 2024. The dog must be in continual care of the 4-H member for the duration of the project.
- Continued care is defined as the 4-H member being responsible for and involved in the feeding, cleaning, and caring of the dog.
- Lessons, instructions and advice for the 4-H member are encouraged, as long as the 4-H member is present in the learning situation and handles or trains the dog the majority of the time present. Such assistance can include occasional handling or training by another person. Only the 4-H member can train the dog at any type of training class on or after April 1, 2024. No one other than the 4-H member is permitted to show the 4H Project Dog at any type of dog show including fun matches.
- Criteria for participation:
 - a. All dogs are required to be vaccinated yearly for Distemper, Hepatitis, Leptospirosis, Parainfluenza, Parvovirus and Rabies by a licensed, accredited veterinarian. 4-H members must have either an ODA Official Health Certificate or the Certificate of Vaccination for the 4H Dog Project. Other certificates of vaccinations, pet record cards or kennel records will not be accepted.
 - b. Make sure when getting the ODA Official Health Certificate or the Certificate of Vaccinations for the 4-H Dog Project, that the dates of the required vaccinations, including the rabies vaccinations are listed. Make certain it is signed by the veterinarian. The veterinarian must also provide their license number or their name/address stamp in the space provided.
 - c. All required vaccinations must have been given after August 16, 2023 and prior to July 11, 2024.
 - d. All dogs participating in the Fayette County Junior Fair Dog Show must be currently licensed in the 4-H members' county of residence. The 4-H member must bring a certificate of license to registration.
 - e. Upon arrival to the Junior Fair Dog Show area all 4-H member will need to stop at the check in table. 4-H members will need to have the health certificate and dog license.
- Dogs must be kept on a leash while on the fairgrounds, except when participating in the ring during judging. Dogs must be kenneled in designated areas. 4-H member is expected to clean up after their dogs.
- Each dog must go through a check station where all females will be checked for signs of heat. If a female dog shows signs of heat, the dog may be shown with the judges' permission. Decisions at the check-in station are final.
- All 4-H members will provide their own equipment as needed, such as collar, leash, water dish, kennel etc.
- Any dog exhibiting unsafe or threatening behavior at any time before, during or after exhibition MUST be removed from the fairgrounds and will not be permitted to return at any time during the Dog Show. A dog that snaps, bites or attempts to bite while in the ring must be immediately excused from the ring and then removed from the fairgrounds. The judge or show officials will dismiss from the ring any exhibitor abusing a dog, which will result in disqualification of exhibitor. Determinations of show committee and/or judge are final.
- Previous participants and or dogs in classes Beginner Novice (Sub-Novice A), Novice A, Open A and Graduate A may not enter the same class.
- 4-H members showing their dogs at any licensed or Member Obedience Trail or at a Sanctioned Match must show their dogs at the same or higher B level classes than they are showing in AKC, UKC or other titling shows. Dogs completing their Companion Dog (CD) title prior to or anytime during the project year must show in the Graduate Novice Classes at the very minimum. Those completing their Companion Dog Excellent title must show in Open, Graduate Open or Utility Classes. For Showmanship Classes, dogs with AKC Junior Handling or like experience must show in the age appropriate B classes.
- All dogs exhibited must be six months of age by the date of the show. This includes Pilot Dog puppies and other assistance dogs. Dogs exhibited in Agility must be 18 months or older on or before the first day of the Agility trial. Proof of age is the burden of the exhibitor or the exhibitor's immediate family. Dogs not meeting this requirement cannot be shown.
- Only the exhibitor, exhibitor's dog and show officials are permitted in the show ring area at any time throughout a show.
- 4-H members only taking Dog Projects 201D You and Your Dog must participate in the Miscellaneous Judging to be held on Monday, June 24 at the Mahan Building.

SHOW EQUIPMENT AND HANDLER'S & DOG'S APPEARANCE:

- Obedience collars include well-fitting plain buckle or quick release collars, or slip collars of an appropriate single length of leather, fabric or chain with two rings, one on each end. Leashes may be of fabric or leather and should be 6 feet in length for sub-novice classes. For novice, graduate novice classes, open and graduate open classes, the leash need be only of sufficient length to provide adequate slack in the heel on leash exercise. Chain leashes are not acceptable. Grooming and Handling collars include a chain or fabric slip collar, or martingale-type show lead. Nothing should be hanging from the collars. Leashes may be of fabric, leather or show chain and long enough to allow for easy handling of the dog.
- Handler's appearance should be neat, and well-

groomed in appearance. They should wear clothing that is comfortable to handle in and appropriate for the dog show. Clothing should not distract, limit or hinder the judge's view of the dog. For Grooming and Handling Classes it is recommended that girls wear skirts, dresses, skorts, dress shorts or similar attire and boys wear dress shirts, ties, and dress slacks. For Obedience, Dog Care, Brace, Team, Rally Classes colored dress jeans and dress shorts are appropriate.

- Dog's appearance should be clean, well brushed and in good physical condition appropriate for the dog's age. The coat should be free from mats and loose hair. Ears should be clean and free from hair in the ear canal. Eyes should be free from matter, and teeth should be free from tartar. Some staining on the teeth of older dogs is permissible. Toenails should be trimmed and hair between the pads should be trimmed to prevent matting and collecting dirt.
- Dogs are not permitted to wear any type of muzzle, prong/pinch collar or electronic collar while on fairgrounds. Exhibitors will be disqualified if their dogs are seen wearing any of these.

Classes:

SHOWMANSHIP:

DO1. Senior Showmanship A - Member must be 15-18 as of January 1. (Neither handler nor dog has had any prior experience in Showmanship).

DO2. Senior Showmanship B - Member must be 15-18 as of January 1, who have shown in Showmanship A or has prior experience in Showmanship, AKC Junior Handling or like experience.

DO3. Intermediate Showmanship A - Member must be 12-14 as of January 1. (The handler or dog has had no experience in Showmanship.)

DO4. Intermediate Showmanship B. - Member must be 12-14 as of January 1, who have shown in Showmanship A or has prior experience in Showmanship, AKC Junior Handling or like experience.

DO5. Junior Showmanship A - Member must be 9-11 as of January 1. (Neither handler nor dog with prior show experience in Showmanship).

DO6. Junior Showmanship B - Member must be 9-11 as of January 1, who have shown in Showmanship A or has prior experience in Showmanship, AKC Junior Handling or like experience.

Overall showman may participate in the Showman of Showmen Contest, but the following animals will not be represented, only the showman – dogs.

OBEDIENCE

Progression of Obedience Classes:

DO7. Beginner Novice A – 1 year, then move to Beginner Novice B or Pre-Novice (Beginner Novice A class can never be repeated by handler OR dog)

DO8. Beginner Novice B – can repeat class with same dog or different dog unless class winner, OR can show in

Pre-Novice unless class winner. Once class winner in both Beginner Novice B and Pre-Novice, then move to Novice A

DO9. Pre-Novice – can repeat class with same or different dog unless class winner, OR can show in Beginner Novice B unless class winner. Once class winner in both Beginner Novice B and Pre-Novice, then move to Novice A

DO10. Preferred Novice – can show one project dog at the Preferred Novice level, provided the youth and the dog meet class eligibility requirements. Youth may show the same dog in other non-obedience classes and/or a different dog in other disciplines/classes provided they meet those eligibility requirements. Youth may NOT show the same dog in another obedience class the same year

DO11. Novice A – 1 year, then move to Novice B (Novice A class can never be repeated by handler OR dog)

DO12. Novice B – can repeat class with same dog or different dog unless class winner, then move to Graduate Novice A – 1 year, then move to Grad Novice B (Grad Novice A class can never be repeated by handler OR dog)

DO13. Graduate Novice – can repeat class with same dog or different dog unless class winner, then move to Open A

DO14. Open – can repeat class with same dog regardless of winning if not moving to Graduate Open

DO15. Graduate Open – can repeat this class with same dog regardless of winning if not moving to Utility

DO16. Utility – can repeat this class with same dog regardless of winning

Obedience Class Exercises:

DO17. Beginner Novice A: Heel on Leash, Figure Eight (on leash), Sit for Exam (on leash), Sit Stay (45 sec), and Recall

DO18. Beginner Novice B: Heel on Leash, Figure Eight (on leash), Sit for Exam (on leash), Sit Stay (leash attached, on ground), and Recall (off leash).

DO19. Pre Novice: Heel on Leash, Figure Eight (on leash), Stand for Exam (on leash), Recall (on leash), Long Sit (on leash), and Long Down (on leash). Long Sit/Down (1 minute each)

DO20. Preferred Novice: Heel on Leash and Figure Eight, Stand for Exam (on leash), Heel Free, Recall, Stay – Sit or Down, Sit Stay (Get Your Leash)

DO21. Novice A & B: Heel on leash, Figure Eight (on leash), Stand for Exam (off leash), Heel Free (off leash), Recall (off leash), Long Sit (leash attached on ground), and Long Down (leash attached on ground) 1 minute

DO22. Graduate Novice: Heel Free and Figure Eight (off leash), Drop on Recall, Dumbbell Recall, Dumbbell Recall over High Jump, Recall over Broad Jump, and Stand, Stay - Get Your Leash.

DO23. Open: Heel Free and Figure Eight, Command Discrimination (Stand, Down, Sit), Drop on Recall, Retrieve on Flat, Retrieve over High Jump, Broad Jump, Long Sit, and Stand, Stay - Get Your Leash.

DO24. Graduate Open: Signal Exercise, Scent Discrimination, Go Out, Directed Jumping, Moving Stand & Examination, and Directed Retrieve.

DO25. Utility: Signal Exercise, Scent Discrimination – Article 1, Sent Discrimination – Article 2, Directed Retrieve, Moving Stand and Exam, and Directed Jumping.

RALLY:

Progression of Rally Classes:

DO26. Rally Novice A – 1 year, then move to Rally Novice B class (Rally Novice A class can never be repeated by handler OR dog)

DO27. Rally Novice B – for exhibitor and/or dog with previous experience showing at the Rally Novice level prior to the county's current project year. If winning first place in Rally Novice B, handler and dog must move to Rally Intermediate A at minimum for next project year.

DO28. Rally Intermediate A – 1 year, then move to Rally Intermediate B class (Rally Intermediate A class can never be repeated by handler or dog).

DO29. Rally Intermediate B – for exhibitor and/or dog with previous experience showing at the Rally Intermediate level prior to the county's current project year. If winning first place in Rally Novice B, handler and dog must move to Rally Advanced A at minimum for next project year.

DO30. Rally Advanced – can repeat class with same dog or different dog until handler and dog win first place; then MUST progress to Rally Excellent level the next year.

DO31. Rally Excellent – can repeat class with same dog or different dog

Rally Class Information:

**Youth may show a maximum of two project dogs per Rally level. Rally levels include Rally Novice, Rally Intermediate, Rally Advanced, and Rally Excellent.

DO32. Rally Novice: All exercises are judged on leash. All dogs must enter and leave the ring on leash. Rally Novice A and B must have 10 to 15 signs (Start and Finish not included) with a minimum of three (3) and a maximum of five (5) stationary signs per class. There are no jumps in this class.

DO33. Rally Intermediate: all signs are judged on leash. Rally Intermediate must have 12 to 17 signs (Start and Finish not included) with a minimum of three (3) and a maximum of seven (7) stationary signs. Intermediate courses will have a minimum of three (3) Advanced level signs. There are no jumps in this class.

DO34. Rally Advanced: all signs are judged off leash. All dogs must enter and leave the ring on leash. Rally Advanced must have between 12-17 stations (Start and Finish not included) with a minimum of three (3) and a maximum of seven (7) stationary exercises per class. Courses shall have a minimum of three Advanced level signs plus one required jump per class. The dog is required to jump once in this class.

DO35. Rally Excellent: All signs are judged off leash. All dogs must enter and leave the ring on leash. Rally Excellent must have between 15 to 20 stations (Start, Finish and Call marker not included) with a minimum of three (3) and a maximum of seven (7) stationary exercises. The dog is required to jump twice utilizing one or two jumps. Courses shall have a minimum of two (2) Advanced level stations and a minimum of three (3) Excellent level stations, plus the two (2) required jumps and the Sit Stay sign.

DEPARTMENT 12 - FEEDERS (Dairy/Beef)

July 16 @ Sales Arena
Events/times are subject to change.

Senior Fair Board:

*Bryan Sheets, *Jim Worley

*denotes chairperson



- **Each animal is to be drug free at the fair when they cross the scale.**
- Rules apply to both dairy and beef feeders.
- All feeders must be owned and on feed by May 11, 2024.
- All feeders must be weighed, tagged, and vaccinated by May 11, 2024 (subject to change). Feeders must be dehorned and castrated on or before May 11, 2024. Castration means no testicular tissue and dehorned means no presence of horns/scurs. If testicular tissue and/or horns/scurs are present, the animal will not be eligible for exhibit at the Fair.
- Exhibitors may tag 4 and show 2 feeders.
- Feeders must weigh between 300 and 750 pounds at Fair.
- Dairy and Beef feeders will be shown separate and will be assigned to the proper weight classes following weigh-in. There will be a maximum of 10 feeders per class.
- Feeders must be halter broke and easy to handle. Exhibitors must show in appropriate attire and animal must be shown with a halter. Feeders are to be shown like a beef steer.
- Feeders must be in place by 7:00 AM on July 15 and will be weighed at 8 AM. Beef Feeder Market Show is on Tuesday, July 16 at 10 AM followed by Dairy Feeders Show.
- Both Beef and Dairy feeders may be crossbred, but must be from recognized foundation breeds. If crossed between dairy and beef breeds, the animal must show in the beef feeder show and cannot show in the dairy feeder show.
- Feeder may be either heifers or castrated males.
- Awards will be given for Fayette County born and raised feeder.

Classes:

F1: Beef Feeder

F2: Fayette County Born and Raised Feeder

F3: Dairy Feeder

Division A – Feeder Showmanship

July 15 (Beef Feeders) July 15 (Dairy Feeders)
@ Sales Arena

- All showmanship participants must register at weigh-in on Monday, July 17 to be able to participate in showmanship. All exhibitors are encouraged to participate in showmanship.
- Feeders are to be shown like a beef steer.
- Feeder Showmanship Classes will be broken by the grade the exhibitor just completed. High school classes may be combined depending on the number of exhibitors. The class winners will compete for Overall showmanship.
- Champion Feeder Showman will compete against Champion Market Steer Showman for Overall Champion Showman.

Classes:

- F4. Senior Feeder Showmanship - grades 10, 11, and 12
- F5. Intermediate Feeder Showmanship - grades 7, 8, and 9
- F6. Junior Feeder Showmanship - grades 4, 5, and 6
- F7. Beginner Feeder Showmanship - grade 3

DEPARTMENT 13 - GOATS

July 18 @ Sales Arena

Senior Fair Board:

- *Travis Mick, Scott Dunham
- *denotes chairperson



Junior Fair Board:

Dylan Ely, Maya McCoy, Kaley Moser

Division A - Goat Breeding

July 18 @ Sales Arena

No buck goats are permitted on the fairgrounds.

Each animal is to be drug free at the fair when they cross the scale.

All animals must remain in their assigned pens between 11:00 PM-5:00 AM. Animals cannot be outside the gates of the fair (i.e. campground) at any time.

All goats must be in the barn for weigh-in by 3:00 PM on July 14. Weigh-ins will begin at 5 PM on July 14.

Fullblood breeding goats must be purebred and recorded within their association; Percentage does may be non-registered purebred or crossbred animals. Registration papers of Fullblood breeding stock must be provided, if asked. Animals must be registered in the exhibitors or family name only. All breeding goats must have a USDA approved scrapie tag, or tattoo, to be admitted to the fair. The USDA scrapie tag/tattoo will be the official fair identification.

Meat Goat Breeding Promotion—The Fayette County Meat Goat Association will sponsor a gift basket to be auctioned off during the Meat Goat Sale with the proceeds to be divided among the meat goat breeding exhibitors. To qualify for a premium, an exhibitor must exhibit the meat goat breeding project at the fair.

Buckeye Propane Company Inc.

The services and products you need from local people you can trust.

CALL us: (800) 344-0427 buckeyepropane.com

Dairy Goat Breeding Promotion – Donated funds are to be divided among the dairy goat breeding exhibitors. To qualify for a premium, an exhibitor must exhibit the dairy goat breeding project at the fair.

Classes will be judged by breed. All recognized breeds may show. Classes will be divided by committee based on participation.

% Doe

G1. 0 to under 3 months

G2. 3 to under 6 months

G3. 6 to under 9 months

Selection of the Junior Champion % Doe & Reserve Junior Champion % Doe

G4. 9 to under 12 months

G5. 12 to under 16 months

G6. 16 to under 20 months

Selection of the Yearling Champion % Doe & Reserve Yearling Champion % Doe

G7. 20 to under 24 months

G8. 24 to under 36 months

G9. 36 plus months

Selection of the Senior Champion % Doe & Reserve Senior Champion % Doe

Selection of the Grand Overall % Doe & Reserve Overall % Doe

Fullblood Doe

G10. 0 to under 3 months

G11. 3 to under 6 months

G12. 6 to under 9 months

Selection of the Junior Champion Fullblood Doe & Reserve Junior Champion Fullblood Doe

G13. 9 to under 12 months

G14. 12 to under 16 months

G15. 16 to under 20 months

Selection of the Yearling Champion Fullblood Doe & Reserve Yearling Champion Fullblood Doe

G16. 20 to under 24 months

G17. 24 to under 36 months

G18. 36 plus months

Selection of the Senior Champion Fullblood Doe & Reserve Senior Champion Fullblood Doe

Selection of the Grand Overall Fullblood Doe & Reserve Overall Fullblood Doe

Pygmy Doe

Class G19: 0 to under 3 months

Class G20: 3 to under 6 months

Class G21: 6 to under 9 months

Selection of the Junior Champion % Doe & Reserve Junior Champion % Doe

Class G22: 9 to under 12 months

Class G23: 12 to under 16 months

Class G24: 16 to under 20 months

Selection of the Yearling Champion % Doe & Reserve Yearling Champion % Doe

Class G25: 20 to under 24 months

Class G26: 24 to under 36 months

Class G27: 36 plus months

Selection of the Senior Champion % Doe & Reserve Senior Champion % Doe

Dairy Breeding Show

G28: (Junior Kids) under 4 months

G29: (Senior Kids) 4 months & under 8 months

G30: (Junior Yearlings) 8 months & under 12 months

G31: (Senior Dry Yearlings) 12 months & under 24 months

G32: (Yearlings Milkers) Does in milk 12 months of age and under 24 months

G33: (Senior Dry Does) 24 months plus

G34: (Senior Milkers) Does in milk 24 months plus

G35: Daughter and Dam

Champion & Reserve Champion Dairy Doe

Division B – Market Goats

July 18 @ Sales Arena

Each animal is to be drug free at the fair when they cross the scale.

The use of muzzles on goats is prohibited while on the Fayette County Fairgrounds. The use of artificial coloring, painting or changing the breed qualities of a goat shall be considered fraud and deception and will not be permitted at the Fayette County Fair Junior Market Goat Show. All market goats entered in the junior fair and open class market goat show must be free of all drug residue of any type, including prescribed and illegal, at the time of show and be eligible for immediate harvest following the show. Clear adhesive is acceptable – NO POWDER.

Each exhibitor may tag three (3) goats and show two (2) that have been born between December 1, 2023 and March 31, 2024.

Meat kids must be identified on May 4, 2024. All meat kids must weigh at least 55 pounds at the fair in order to show.

There are no horn length limits for market goats, however, horn tips should be blunted.

All goats will be weighed in on Sunday, July 14 at 5:00 PM.

Exhibitors may show a doe or wether in the market shows. A doe showing in a market class may not show in the breeding goat shows. Meat and dairy breeds will show separately.

Market Classes:

G36. Meat Kid – Dairy breeds (no meat breed influence) and meat breeds will show separately.

Division C - Goat Showmanship

July 18 @ Hog Pavilion

Meat goats and dairy goats will show separately. The showmanship class winners for goats will come back and compete for Overall Goat Showman.



DESTINATION OUTLETS

SHOP | EAT | PLAY



DestinationOutlets.com
800-213-9083

8000 Factory Shops Blvd.
Jeffersonville, OH 43128



DOWNLOAD OUR
MEMBERSHIP APP

Classes:

- G37. Senior Goat Showmanship - grades 10, 11, and 12
- G38. Intermediate Goat Showmanship - grades 7, 8, and 9
- G39. Junior Goat Showmanship - grades 4, 5, and 6
- G40. Beginner Goat Showmanship - grade 3

DEPARTMENT 14 – HORSES and PONIES

Events/times are subject to change.

Senior Fair Board:

*Scott Dunham, Doug Marine

*denotes chairperson



Junior Fair Board:

Trinity Johns, Taylor Payton,

Amberly Szczerbiak

2024 FAYETTE COUNTY HORSE PROGRAM GUIDELINES

1. The "Uniform Rules For Horse Shows in Ohio" (4-H 179) will govern 4-H horse shows. All members (or families) taking a horse project need to purchase a rule book and be familiar with it.
2. Mandatory for all members to follow the 4-H Equine Mandatory Helmet Use Policy in "Uniform Rules For Horse Shows in Ohio" (4-H 179).
3. All members and their parent(s)/guardian(s) must sign a new "Permission to Participate" form each year. New members are required to get the 191R Horses, Safety and You manual, and with a parent/guardian to view required links, Every Ride, Every Time and Horses, Kids & Ethics. After reading the manual and viewing the required links, the member and parent(s) sign the form on the inside back cover of the manual, Advisors will keep on file a copy of this signed form and each year's new permission forms. When additional family members join, they can sign the original forms after they have seen the films and read the manual. Members who are not in a horse club should turn in the permission form and a copy of the 191R form in to the Junior Fair Board Coordinator and the Senior Fair Board Horse Representatives no later than May 15.
4. Competition at the county fair show and participation in the horse activities, is limited to those enrolled in a Fayette County 4-H Club or FFA Chapter with a horse or horseless-horse project.
5. An ID sheet is to be completed for each horse, with a maximum of 5 (five) animals per member. Members of an immediate family may use the same horse with the exclusion of leased horses, but each member must complete an ID sheet for the animal. ID sheets are to be turned in by May 15, 2024 to Junior Fair Board Coordinator. Primary horse(s) (maximum of 2) of a member stay at the fair all week. Additional horses may be brought in for Horse Show on Tuesday and taken back home that day, and/or Fun Day. Standardbreds that are currently being raced may be taken from the fairgrounds as needed to race.
6. If an animal is leased, a contract to lease must be reviewed and accepted by the Junior Fair Board Coordinator and the Senior Fair Board Horse Representatives. A signed copy of the contract must be filed by May 15, 2024.
7. All members must attend a minimum of two (2) outdoor practices with their project horse(s) and be evaluated by an advisor as to their safety before going to the fair. Those in a non-horse club need to make arrangements to attend two (2) of one of the horse club's practices for this purpose. The horse clubs have the right to require more than the minimum two (2) practices. Each club will honor the other club's meetings attendance and shall be counted as a meeting.
8. Horses are over 58". Ponies will measure at or below 58".
9. Age of the exhibitor is determined as of January 1, 2024.
10. Stallions may not be shown unless they are part of a production project, and then only during the horse's first calendar year.
11. The horse committee will deal with hardship case decisions on a case by case situation.
12. The 4-H horse shows must have a steward who will interpret and clarify rules. The steward will be the President of the Fayette County Horse Committee. Any exhibitor or family member with a grievance is to contact the steward first, not the judge. Judges' decisions about the placings are final. Poor sportsmanship on the part of the exhibitors, parents, or family members will not be tolerated.
13. Safe and legal tack is to be used at all times. Refer to the rule book for specific examples.
14. Each member is to complete a project book and, if applicable, participate in the skillathon/interview to complete their project.
15. Stall assignments will be made by the Junior Fair Board Horse Representatives.
16. Entries are due June 5. Entries submitted after June 5 must include a \$25 late fee for each exhibitor. No entries will be accepted after June 7. **Showmanship is mandatory for all members showing horses.** After all entries are received, class determinations will be made according to the number of entries per class. Age divisions may be added or deleted as needed.
17. All Exhibitors with a horse at the fair will be required to have emergency contact information on file. Each club will be responsible for making sure their members' cards are complete and turned into the Horse Committee Secretary who will make sure appropriate copies are available for Senior Fair Board Members.
18. Exhibitors must be aware of and comply with body condition score requirements in the "Uniform Rules For Horse Shows in Ohio" (4-H 179R). If your horse/pony has a body condition score of less than 4, you will not be permitted to exhibit or show your animal at the fair.
19. A mandatory meeting for all horse exhibitors will be held on Monday of the fair at noon. This is a required meeting. A member can only be excused if they make prior arrangements with an advisor or Junior Fair Board Member. For further clarification, please see the 2024 Fayette County Horse Program Guidelines. Pertinent information and show numbers will be discussed and dispersed at this meeting.
20. If a member chooses to bring multiple horses, each member will be assigned a show number.
21. It is the expectation of all 4-H Horse Club advisors

to help with all activities related to the 4-H Horse Program/Show: Mock Show, Move-in Day, setting up for classes, working entry and exit gates and making sure all shows run smoothly.

Classes:

- H1. Yearling Production Class
- H2. Western Showmanship
- H3. Western/English Showmanship Horse/Pony 2nd yr*
- H4. Western/English Showmanship Horse/Pony 1st yr*
- H5. English Showmanship, Horse/Pony – All Ages
- H6. Easy Gaited Showmanship – All Ages
- H7. Overall Showmanship Class
-1st and 2nd place winners of classes H2-H6 only. Winner represents the horse department in the Showman of Showmen Contest.
- H8. Hunter Under Saddle – All Ages
- H9. English Equitation – All Ages
- H10. Easy Gaited Pleasure – All Ages
- H11. Easy Gaited Horsemanship – All Ages
- H12. Walk/Trot Western Pleasure / HUS, 1st yr*
- H13. Walk/Trot Horsemanship/Equitation, 1st yr*
- H14. Walk/Trot Western Pleasure / HUS, 2nd yr*
- H15. Walk/Trot Horsemanship/Equitation, 2nd yr*
- H16. Western Pleasure / HUS, 2nd yr – 3 gaited*
- H17. Horsemanship/Equitation, 2nd yr – 3 gaited*
- H18. Western Pleasure
- H19. Western Horsemanship
- H20. Ranch Pleasure – All Ages
- H21. Ranch Riding – All Ages – Pattern B
- H22. Pleasure Driving – All Ages
- H23. Reining – All Ages
- H24. Trail – All Ages
- H25. Trail-Walk/Trot – 1st & 2nd yr*
- H26. Trail – Easy Gaited
- H27. Barrels – All Ages
- H28. Barrels – Walk/Trot – 1st & 2nd yr*
- H29. Flags – All Ages
- H30. Standardbred Driving Project

**1st and 2nd year members, any age, may show only in 1st and 2nd yr. classes on Tuesday. Beginners may choose either walk-trot or 3-gaited classes, but not both.*

PLEASE NOTE: After final entries are made, classes may be added or divided per the Horse Committee.

Hi-Point awards will be given for Tuesday's show to individuals in 3 divisions: Beginner, Junior Division and Senior Division. The awards are given for one horse/one exhibitor pair.

Horse Activity Schedule during Fair Week:

Monday	7 AM – All horses must be in place 12 Noon – Barn meeting
Tuesday	8 AM – Junior Fair Horse Show,
Wednesday	9 AM – Good Groom and Clean 6 PM – Costume Contest
Thursday	9 AM – Jr. Fair Versatility Show
Friday	9 AM – Contest and Fun Show

Horses can begin to be released after the Fun Show on Friday until 4 PM. Horses released any time after 7 PM.

DEPARTMENT 15 – POULTRY

Check in Sunday, July 14, 8:00 AM-11:00 AM
@ Small Animal Arena



Senior Fair Board:

*Wayne Arnold (chairperson)

Junior Fair Board:

Anna Eggleton, Emma Eggleton,
Jonah Goddard, Morgan, Pitstick, Cole Whiteside

General Department Rules

- The Small Animal Barn will be closed and locked every evening of the Fair at 11 PM and opened at 6 AM.
- Judging for market poultry will be held on Wednesday, July 17 @ 8:00 AM in the Small Animal Arena. Breeding poultry will be judged on Wednesday, July 17 following market at 8:00 AM.
- All Junior Fair poultry must be brought to the fairgrounds on July 14 from 8:00 AM to 11:00 AM. All meat chickens and turkeys will be leg banded and weighed prior to placing in pens.
- All poultry will be expected to come into the Small Animal Barn from 8:00 AM to 11:00 AM only, July 14. All breeding birds that are over one year of age or did not come from an NPIP source will be blood tested at owner's expense. Birds under one year of age do not need to be tested if they have hatchery papers at the time of check-ins. Turkeys will be checked in at the same time as the chickens.
- All birds under 1 year of age will need hatchery papers. This includes turkeys, meat chickens, and all other poultry.
- No birds can enter the barn or be placed in their pen until they are checked in, leg banded and hatchery papers are reviewed.
- **Each animal is to be drug free at the fair when they cross the scale.**
- There will be no re-weighs after birds have already passed over official scale. All birds must weigh between 5 and 7 pounds. Meat birds weighing less than 5 pounds and over 7 pounds are considered underweight and overweight, respectively, and therefore ineligible for the champion drive and premium sale. Birds over or under weight will show in Over or Under Class.
- Birds may not be swapped out after they have already been weighed. If a bird dies or is injured, the member may not be provided another bird from home or by another member. Weigh-ins and check-ins are final, it is the member's responsibility to insure that the birds they bring meet their weight specifications at weigh-ins and that they are well provided for during fair week.
- Poultry will show by divisions. *We reserve the right to adjust the number of divisions based upon the number of market pens that check in.
- 5 pens will be selected in every division and can all come from the same class, per the judge's discretion, to come back for top 5 overall placings.
- Meat pens will be loaded on Wednesday evening. Time to be announced. Small Animals barn will be locked during load out.
- All birds will be released Friday, July 19 after the sales

are over.

- No icing of market chickens or turkeys.
- Skillathon for poultry is June 26 from 5:00-7:00 PM at the Extension Office. Exhibitor must attend and complete skillathon in order to show.
- Hatch Dates are February 28 for turkeys and May 29 for chickens. Birds must be hatched on these dates or afterwards, not before. Only one market pen of chickens and/or two market turkeys per exhibitor.
- Exhibitors may exhibit according to the following guidelines: (Note: This is by project, not years in 4-H, or age)
1st year - Poultry I - exhibit 1 to 4 birds and/or one Pen of 3.
2nd year - Poultry II - exhibit up to 6 single birds and/or one Pen of 3.
3rd year and up - Poultry Advanced - exhibit up to 8 birds and/or one Pen of 3.
Meat Pen of Three
- The American Poultry Association's Standard of Perfection will be the guide for judging all standard breed breeding stock.
- Breeding stock will be divided into a minimum of five classes: Standard Bred Female, Standard Bred Male, Bantam Female, Bantam Male, and the Home Crossbred Class. All breeding stock bought or raised on the farm and not purchased from hatchery will need to be pullorum tested at the fairgrounds on July 14. Standard breed pen of 2 pullets must be laying.
- The Standard and Bantam classes will be split into

smaller classes if there are ten birds of any one category as outlined in the Standard of Perfection until the class is composed of a single breed unless it reduces the original class to less than ten birds.

- First and second place will be awarded in all of the breeding classes and Overall Champion and Reserve male, and an Overall Champion and Reserve Female will be selected from these.
- A copy of the proof of purchase with a clearly marked hatch date for meat pens must be presented at weigh-in. All birds used for meat pens must originate from a NPIP (National Poultry Improvement Plan) certified hatchery.
- Birds must be bred by Fayette County Exhibitors and not be a recognized breed in the Standard of Perfection to be entered in the Home Crossbred Class.
- An interview by the judge about the birds' value and history, and the condition of the specimen will be considered in awarding the placing in the Home Crossbred Class.
- Grooming time for washing poultry must be completed at least 2 hours before the start of the show.

Classes:

- P1. Chickens – standard breed (rooster)
- P2. Chickens – standard breed (hen)
- P3. Chickens – standard breed (pullet)
– Pen of 2 – Must be laying
- P4. Chickens – bantam breed (rooster)
- P5. Chickens – bantam breed (hen)



5557 Washington-Waterloo Road
Washington C.H., Ohio 43160

Tim Maggard

(740) 572-2137

Tyler Maggard

(740) 463-3179

maggardsnursery@yahoo.com

- P6. Chickens – Home Crossbred Class
- P7. Pen of 3 – Market
- P8. Ducks
- P9. Geese
- P10. Pigeons
- P11. Guinea

- All meat pens will be classified as commercial and the following breeds of chickens will be considered: Barred Rock, New Hampshire, White Rock, Buffed Rock, Wyandotte, Cornish, & Cornish Cross, which is preferred.
- Meat pens of three must be all cockerels.
- All meat pens of 3 chickens must weigh between 5 - 7 lbs. and be under 7 weeks of age in order to show.
- Members taking the pullet project will take two birds to exhibit; each bird must be laying at the time of the show and must be under the age of one year.

Poultry Showmanship

July 15 @ Small Animal Arena @ 4:00 PM

Classes:

- P12. Senior Showmanship - grades 9 & above
- P13. Intermediate Showman - grades 7 & 8
- P14. Junior Showman - grades 5 & 6
- P15. Beginner Showman - grades 3 & 4

***NOTE*: There must be at least 10 duck exhibitors in order to have a Showmanship Class.**

Turkeys:

- Turkeys must have been hatched on or after February 28, 2024. All turkeys must originate from a NPIP (National Poultry Improvement Plan) certified hatchery.
- Only Toms will be allowed to show and sell.
- Turkeys must arrive at the Fairground on July 14 from 8:00 AM – 11:00 AM. All turkeys will be leg banded and weighed before being put in pens. Toms must weigh not less than 30 pounds and not more than 45 pounds at weigh-in.
- Members may show 2 and sell 1 turkey.

Classes:

- P16. Turkeys
- P17. Turkey Showmanship

DEPARTMENT 16 - RABBITS

Senior Fair Board:

*Wayne Arnold (chairperson)

Junior Fair Board:

Maycin Adkins, Alyvia Atkinson,

Kelsy Douglas, Katie Harris,

Jacob Manbevers, Bailey Miller,

Abigail Noble, Kaden Noble, Randon Stolzenburg



General Department Rules

- All Jr. Fair rabbits must be brought to fairgrounds on Sunday, July 14 from 8:00 AM- 11:00 AM. All market rabbits will have tattoos checked and weighed prior to placing in pens. No re-weighs after rabbits have passed over official scale.
- **Each animal is to be drug free at the fair when they cross the scale.**

- No Rabbits may be moved into fairgrounds before 8:00 AM or after 11:00 AM Sunday, July 14.
- The Small Animal Barn will be closed and locked every night at 11:00 PM and opened at 6:00 AM every morning.
- All 4-Hers taking a rabbit project must attend the Rabbit Department barn meeting on Monday, July 15 at 8:00 AM.
- Rabbit Showmanship will be held on Monday, July 15 at 8:30 AM in the Small Animals Barn. Changes can be made during weigh-ins on Sunday, July 14.
- Judging for meat pen of 2 and breeding rabbits will be held on **Tuesday, July 16, at 8:00 AM** in the Small Animals Barn, followed by the Junior Fair Rabbit Breed Show.
- Rabbits must have visible ear tattoos.
- All rabbit entry forms must have each rabbit identified by breed, age, color, sex and tattoo number, and Class 4 or 6 to be eligible to show. No exception.
- Only one pen of two market rabbits per exhibitor.
- Rabbit will show by divisions. *We reserve the right to adjust the number of divisions based upon the number of market pens that check in.
- 5 pens will be selected in every division and can all come from the same class, per the judge's discretion, to come back for top 5 overall placings.
- No individual exhibits will be sold in the Jr. Fair Sale.
- Exhibitors are responsible for daily care of their project until official fair release date for that project. This includes feed, water and pens cleaned until released.
- Market rabbits will be loaded on Wednesday, July 17. Time will be announced. The Small Animals barn will be locked during load out.
- July 19 all other rabbits released after sales.

Division A – Market Rabbits

July 16 @ Small Animal Arena

- Exhibitors have the option to purchase their meat pen or purchase/breed a doe and produce their own meat pen. The recommended market project breeding date is March 10, 2024.
- Skillathon is July 1, from 5:00-7:30 PM at the Extension Office. Exhibitors must attend and complete in order to show.
- All meat pen rabbits must be permanently identified on **Friday, June 7 from 5:30 PM to 8:00 PM in the Small Animal Barn.** Tattoo numbers will be checked at check-in on Sunday, July 14. Exhibitors may tag 4 individual rabbits and show 1 meat pen of 2 rabbits at fair. If rabbits are not identified at the Small Animal Barn on June 7, they will not be allowed to be exhibited. Date of birth must be listed. Breed rabbit projects that need a tattoo may also come to the Small Animal Barn on Friday, June 7 from 5:30 PM to 8:00 PM for tattooing.
- To be eligible for exhibition, each meat pen (market) rabbit must weigh 4-6 pounds, and be 95 days of age, or less on Sunday, July 14, 8:00 AM to 11:00 AM. Any rabbit under 4 lbs. or over 6 lbs. will not be in the sale. A limit of one meat pen of two rabbits per exhibitor can be shown at the fair. Failure to meet weight requirements disqualifies selling or

competing for Champion or Reserve Champion. Rabbits over or under weight will show in Over or Under Class.

- All meat pens will be classified as commercial & the following breeds will be considered: American, American Chinchilla, Californian, Champagne D'Argent, Cinnamon, Creme D'Argent, Giant Chinchilla, Hotot, New Zealand, Palomino and Satin.

Classes:

R1: Meat Pen of 2 (must weigh 4-6 pounds and be 95 days of age or less to sell)

Division B – Breeding Rabbits

July 16 @ Small Animal Arena

ARBA Standard Show Rules will be followed:

- o Breeding animals will be shown by age only and Class 4 or Class 6.
- o Rabbits showing any sign of disease, faults, or disqualifications will be placed at the bottom of the class and the judge will explain these placements to the exhibitor.
- o A mixed breed class will be offered if needed.
- Best of Breed and Best Opposite Sex of Breed will be awarded for each breed. All Best of Breed 6 Class rabbits will compete for Best 6 Class rabbit. All Best of Breed 4 Class rabbits will compete for Best 4 Class rabbit. Best of Show Rabbit will be selected from the Best 6 Class rabbit and the Best 4 Class rabbit.
- Animals that are breeds which are not listed below and that are 6 months or over must show as seniors.

Due to size difference in breeds, all breeds are not able to compete in the 6-8 month classes. The following are the breeds capable of showing in the 6-8 month classes: American, Beveren, Californian, Champagne D'Argent, Checkered Giant, American Chinchilla, Giant Chinchilla, Cinnamon, Creme D'Argent, Flemish Giant, Hotot, French and English Lops, New Zealand, Palomino, Satin, Silver Fox.

- All breeding rabbits are recommended to be purebred.
- Breed rabbit exhibitors may exhibit the following number of rabbits:
 - 1st year members: 1 to 3 rabbits with option of market pen of 2
 - 2nd year members: up to 5 rabbits with option of market pen of 2
 - 3rd year members: up to 7 rabbits with option of market pen of 2
 - 4th year & up members: up to 9 rabbits with option of market pen of 2

Class 4 Rabbits:

4R2. Jr. Buck under 6 months old

4R3. Jr. Doe under 6 months old

4R6. Sr. Buck – over 6 months old

4R7. Sr. Doe – over 6 months old

Class 6 Rabbits:

6R2. Jr. Buck under 6 months old

6R3. Jr. Doe under 6 months old

6R4. Int. Buck – 6 – 8 months old (ARBA Standard

Problem Water!

Call us Today for a Free Water Analysis

Chrisman

H₂O

Conditioning

Bottled Water • Automatic Softeners • Filters • Demand Water Softeners

- Drinking Water Systems
- Free Water Analysis
- Lease Options Available
- Free Estimates
- Financing Available
- Electronic Demand Water Softeners
- Salt Delivery Available
- We Service Most Brands

Water Softeners Starting at \$459 Installation Available

Sales Service Rentals

335-2620



1020 E. Market • Washington C.H.
www.chrismanh20.com

Serving You Since 1947 • Jim & Mark Chrisman

weade

L.L.C.

REALTORS & AUCTIONEERS

402 E. Court St.
P.O. Box 337
Washington C.H., OH

740-335-2210



Show Rules)

- 6R5. Int. Doe – 6 – 8 months old (ARBA Standard Show Rules)
- 6R6. Sr. Buck 8 months & over
- 6R7. Sr. Doe 8 months & over

Division C – Rabbit Showmanship

July 15 @ Small Animal Arena

- Rabbit showmanship will begin on **Monday, July 15 at 8:30 AM** in the Small Animals Barn.
- Exhibitors are encouraged to participate in Rabbit Showmanship.
- You may show one of the rabbits in your pen of 2 in showmanship or 1 of your breed rabbits.
- Exhibitors must use their own rabbit for the showmanship contest.
- The **deadline for entering showmanship is Sunday, July 14 at 11:00 AM**. Exhibitors will print their name along with the tattoo number of the rabbit that they are using for showmanship on the class sheet.
- The Junior Fair Board with Senior Fair Board reserves the right to break the showmanship classes or combine small age group classes.

Classes (*grades just completed):

- R9. Sr. Showmanship - grades 12 & above (may be combined with grade 11)
- R10. Sr. Showmanship - grades 11 (may be combined with grade 12)
- R11. Sr. Showmanship - grades 10 (may be combined with grade 11)
- R12. Intermediate Showmanship - grade 9
- R13. Intermediate Showmanship - grade 8
- R14. Intermediate Showmanship - grade 7
- R15. Jr. Showmanship - grade 6
- R16. Jr. Showmanship - grade 5
- R17. Beginner Showmanship - grade 4
- R18. Beginner Showmanship - grade 3

REMINDER: Must keep rabbits fed and watered at all times or no sale or premium. NO EXCEPTIONS!

DEPARTMENT 17 - SHEEP

July 17 @ Sales Arena

Senior Fair Board:

*Travis Mick, Scott Dunham

Junior Fair Board:

Megan Brandt, Corbin Melvin,
Ellie Robinette



** A sheep exhibitor meeting will be held on Wednesday, July 17 at 3:00 PM in the Show Arena before the beginning of showmanship. Attendance is mandatory.

Each animal is to be drug free at the fair when they cross the scale.

All sheep must be in the barn for weigh-in by 3:00 PM on July 14. Weigh-ins will begin at 5:00 PM on July 14. All animals must remain in their assigned pens between

11:00 PM-5:00 AM. Animals cannot be outside the gates of the fair (i.e. campground) at any time.

The use of muzzles on lambs is prohibited while on the Fayette County Fairgrounds. The use of artificial coloring, painting or changing the breed qualities of a lamb shall be considered fraud and deception and will not be permitted at the Fayette County Fair Junior Market Lamb Show. All market lambs entered in the junior fair and open class market lamb show must be free of all drug residue of any type, including prescribed and illegal, at the time of show and be eligible for immediate harvest following the show. Clear adhesive is acceptable – NO POWDER.

Division A – Market Lamb Showmanship

July 17 @ Sales Arena

- All exhibitors are encouraged to participate in Market Showmanship to be held Wednesday, July 17, following the breeding sheep show.
- Additional entries will be taken at lamb weigh-in on Sunday, July 14, starting at approximately 5:00 PM after the goats.
- Showmanship contestants may only show a market lamb that he/she owns that has been weighed and tagged. Contestant must be an eligible market lamb exhibitor enrolled in a market lamb project.

Classes:

- SH1. Senior Showmanship: Grades 10, 11 & 12
- SH2. Intermediate Showmanship: Grades 7, 8 & 9
- SH3. Junior Showmanship: Grades 4, 5 & 6
- SH4. Beginner Showmanship: Grade 3

Division B – Market Lamb

July 17 @ Sales Arena

- Ownership deadline for all market lambs is May 1 of the current year.
- All market lambs must be ear tagged on May 4, 2024, 9:00 AM – 11:00 AM at the Sheep Barn on the Fayette County Fairgrounds to be eligible for exhibition at the fair. All male lambs must be wethered or banded at the time of tagging. PERFORMANCE Lambs must be weighed at tag-ins. Must have scrapie tag.
- **All market lambs will be identified by ear tags only, received at market lamb tag-in on May 4, to be eligible to compete.**
- **Any two lambs tagged in may be entered in the Pen of Two class, in addition to being shown as a Single.**
- **Champion and Reserve Overall Single market lambs are not eligible to compete as part of the Pen of Two class(es).**
- **Lambs must be identified at weigh-in on which two will be exhibited as the Pen of Two, unless youth exhibit the Champion or Reserve Overall market lamb, at which time the third animal (that was tagged, entered and exhibited as a single) can replace the Champion or Reserve Overall in a pen of two.**
- **If there is more than one class, the first and second place pens will show for Overall Grand and Reserve pen.**
- **Pen of Twos will be shown by weight (combined).**
- **Champion and Reserve Overall Pen of Two**

will sell at the beginning of the sale with the champion and reserve overall single market lambs.

- All lambs must be in place by 5:00 PM on Sunday, July 14, 2024. A mandatory barn meeting will be held at 4 PM prior to weigh-in.
- All lambs will be weighed Sunday, July 14 immediately after the goats at 5 PM. No re-weighs are permitted. It is suggested that lambs be clean and shorn with no more than ¼" of wool above the knees.
- All members may tag in 5 lambs and show 3.
- All sheep must have approved scrapie identification.
- Lambs must weigh a minimum of 90 lbs. in order to be eligible for the Junior Fair Livestock Sale.
- Lambs will be shown by breed. No registration papers are required. Classification of breed will be done at Sunday's weigh-in. ALL RECOGNIZED BREEDS in addition to Crossbred, natural colored, and white-face cross (brockle) are included and will be treated as breeds if the minimum of 5 head or 3 exhibitors is met.
- All lambs weighing 90 lbs. and up will show by weight within their classified breeds.
- All exhibitors will be given a card for each market lamb they are exhibiting. Exhibitors must fill out each card with his/her name, both Fayette County fair ear tag number and scrapie tag number, and the breed of his/her lamb. These cards are to be brought to the scales at the time of weigh-in to be processed for weight, breed and sales destination.
- Classification will be done by three individuals evaluating lambs on the breed characteristics of each lamb using guidelines/criteria of breed associations.

If the classifiers disagree with the breed the exhibitor designated on his/her card, they can give the exhibitor the choice of going into the breed class in which it actually represents, or defaulting to the crossbred division. There will be no re-classifications.

- Classes will be broken by weight within each breed classification.
- Must be a minimum of 5 lambs or at least 3 different exhibitors in order to make a breed class. Any breed not meeting this will show in All Other Breeds (AOB).
- First and Second Place lambs in each weight class within a breed division will show for Champion and Reserve Champion of the breed.
- Champion and Reserve Champion of each breed must show for Overall Champion and Reserve Champion Market Lamb.
- Only the Overall Champion and Reserve Champion Market Lambs, and Champion and Reserve Champion Pens of 2 are required to sell in the Fayette County Junior Livestock Sale. Show results will determine sale order.
- Any exhibitor having more than one lamb in a weight class or any Champion drive may have any other eligible Fayette County 4-H or FFA exhibitors show the lamb(s).

Classes:

SH5. Market Lamb

SH6. Pen of 2: Market Lamb

HERITAGE MEAT COMPANY



Meat Processing and Sales

HERITAGE MEAT COMPANY FEATURING
Meat Processing **and** Retail Sales of Beef and Pork

STOP BY AND SEE US AT

604 Rose Avenue • Washington C.H., Ohio

(We currently have freezer beef for sale)

or call us at 740-335-6650

WE HOPE TO SEE YOU SOON!!

Division C – Breeding Sheep

July 17 @ Sales Arena

- Judging will be held on Wednesday, July 17 beginning at 3:00 PM.
- Breeding sheep must be purebred and recorded with their association; crossbred ewes may be non-registered purebred or crossbred animals. Registration/Entry of breeding stock must be confirmed at weigh in. Animals must be registered in the exhibitors or family name only. All breeding sheep must have a USDA approved scrapie tag to be admitted to the fair.
- Breeding Promotion-- To qualify for a premium, an exhibitor must exhibit the breeding project at the Fair.
- Lambs shown in the breeding show cannot show in market classes.
- Classes will be judged by breed. All recognized breeds may show. Classes will be divided based on participation.
- All lambs must remain in the pens between 11:00 PM and 5:00 AM.

Classes:

- SH7. Purebred Ram 1 – 2 years old
- SH8. Purebred Ram Lamb – under 1 year old
- SH9. Grade Ram 1 – 2 years old
- SH10. Grade Ram Lamb – under 1 year old
- SH11. Supreme Ram – any age
- SH12. Purebred Ewe 1 – 2 years old
- SH13. Purebred Ewe Lamb – under 1 year old
- SH14. Grade Ewe 1 – 2 years old

SH15. Grade Ewe Lamb – under 1 year old

SH16. Supreme Ewe, any age

Division D – Breeding Sheep Showmanship

July 17 @ Sales Arena

- The Breeding Sheep Showmanship contest will follow the judging of the Breeding Sheep contest.
- Breeding project exhibitors are encouraged to participate.
- Contestants must own their breeding project and have completed a sheep breeding project.

Classes:

- SH17. Senior Sheep Showmanship - grades 10, 11, and 12
- SH18. Intermediate Sheep Showmanship - grades 7, 8, and 9
- SH19. Junior Sheep Showmanship - grades 4, 5, and 6
- SH20. Beginner Sheep Showmanship - grade 3

DEPARTMENT 18 – SWINE

Senior Fair Board:

*Mike Lower, Jenny Coe



Junior Fair Board:

Emma Bower, Garrett Carson, Lauren Farrens, Emma Hagler, Hunter Havens, Mallory Johnson, Cole Kirkpatrick, Pierce McCarty, Alison Reeves, Emily Reeves, Dane Wilt

SUPER SPORT
SS
Pizza & Wings
740-333-7080
151 N. MAIN STREET • WASHINGTON C.H.

SUPER SPORT
SS
BARBER SHOP
740-636-0000
112 N. Hinde Street • Washington C.H.

CAPUANA'S COURTVIEW
DELICATESSEN
149 N. Main Street • Washington C.H. **740-895-6261**

MAIN ST
CREAMERY
145 N. MAIN STREET
WASHINGTON C.H.

An exhibitor meeting will be held on Monday, July 15 at 7:00 AM in the Swine Arena. **Attendance is mandatory.

Each animal is to be drug free at the fair when they cross the scale.

*** No shaving or excessive clipping allowed! All hogs must have at least ½ inch of hair on the entire body with the exception of the ears and tail. Hair will be measured at weigh-ins and any hog with less than ½ inch of hair WILL be disqualified and must be removed from the barn immediately. NO EXCEPTIONS!**

Division A - Breeding Swine

July 16 @ Swine Arena

- The show will be held on Tuesday, July 16, at 1:00 PM. Exhibitors must carry this as a project in 2024 in a Junior Fair organization.
- Classes will be judged for all recognized breeds. Classes will be divided based on participation.
- Breeding Promotion-- To qualify for a premium, an exhibitor **must exhibit the breeding project at the Fair.**
- Exhibitors may show only purebred animals with the exception of commercial gilt classes. Registration papers must be presented at check-in.
- Exhibitors may show up to 2 entries per class.
- Any grade or crossbred breeding gilt may be judged in the Commercial Gilt classes. Crossbred Breeding Gilt will be shown by weight.
- Gilt must be brought to the fairgrounds after 5:00 PM on July 15 and must be removed by 7:00 AM, Wednesday, July 17. Gilt is released after the breeding gilt show.
- Gilt is not eligible to show in both the breeding and market show.

Classes:

- SW1. Registered Gilt – Farrowed in Dec. 2023
- SW2. Registered Gilt – Farrowed in Jan. 2024
- SW3. Registered Gilt – Farrowed in Feb. 2024
- SW4. Registered Gilt – Farrowed in Mar. 2024
- SW5. Commercial Gilt – shown by weight

Breeding Swine Showmanship (Classes will be broken the day of show; the following classes are subject to change, grades are determined by grade just completed):

- SW6. Senior Showmanship - grades 10-12
- SW7. Intermediate Showmanship - grades 7-9
- SW8. Junior Showmanship – grades 4-6
- SW9. Beginner – grade 3 only

Grand Champion Breeding Gilt Showman will show in the final Showmanship Drive against the Market Swine Showman for the Showman of Showmen representative.

Exhibitors must show their own gilt.

Division B - Market Hog Show

July 17 @ Swine Arena

- Judging will be held on Wednesday, July 17 in the Swine Pavilion.

- All market hogs must be in place by 7:00 AM on July 15.
- Identification cards with ear notches, markings, and breed must be turned in by May 15, 2024 or the exhibitor will not be eligible to show.
- First year swine project members may mark 3 hogs, show 2, & sell 1 hog. All members 2nd year and up may mark 5, show 3, and sell 1 hog.
- All market hogs must be weighed on Monday, July 15 at 7:00 AM. All market hogs will be ear tagged and tattooed at weigh-in.
- Market hogs weighing less than 220 and over 280 pounds may show in an over/under weigh class, but will not sell in the Junior Fair Hog Sale or show for Grand or Reserve Champion in the Market Hog Show. Extra hogs will be sold at market price to the designated livestock yard (this year, 2024, depending on packer availability). Individuals not making weight may participate in showmanship.
- Gilt shown at the breeding gilt show on Monday, July 15 may not be shown in a Market Gilt Class or Market Showmanship Class. Exhibitors must show their own animal.

Purebred Barrow Classes:

- All purebred barrows will show by breed
- Each breed must have 5 participants to make a designated class or they will show in OPB (Other Purebreds) class
- Classes will be broke at the discretion of the swine committee
- Purebred barrows must be pedigreed and breed eligibility classifications will be enforced.
- National Swine Registry (<http://www.nationalswine.com>) and Team Purebred (<http://www.teampurebred.com>) breed classifications will be used.
- Pedigrees must be in exhibitor's, or exhibitor's immediate family, name and presented at weigh-in.
- A Purebred Barrow Champion and Reserve Champion will be selected to participate in the Champion drive for Overall Market Hog Champion and Reserve

Crossbred Barrow and Gilt Classes

- Crossbred barrows and gilts will be classified as light and dark crosses by committee at weigh-in. The committee's decision is final.
- A Champion and Reserve Champion will be selected for dark cross barrows, light cross barrows, dark cross gilts, and light cross gilts to participate in the Champion Drive for Overall Grand and Reserve Champion Market Hog.

The Market Hog Show order will consist of:

- All purebred barrow classes (shown in alphabetical order), followed by dark cross barrows, light cross barrows, dark cross gilts, and light cross gilts.
- Champion and Reserve Champion will be selected for each classification prior to starting weight classes for next classification.
- The five classification champions will show for Overall Market Hog Champion following the selection of the Light Cross Gilt Champion.
- The Overall Reserve Champion market hog will be selected from the 4 remaining classification

champions and the Reserve Champion from the Overall Grand Champion's classification.

- All remaining classification champions and Reserve champions will be used to select a 3rd, 4th, and 5th Overall Market Hog.
- The Overall Grand and Reserve Champion market hogs are terminal. Adhering to the Ohio Department of Agriculture and state laws.
- Blood testing will occur if mandated by the state.
- All Junior Fair swine project members are required to clean their pens out by Thursday evening. Exhibitors not abiding by this rule will be charged a pen cleaning fee.
- Pens, aisles, and adjacent areas are to be cleaned daily or as needed.
- **No oil may be used on the hogs for show or sale. Water only may be used for dressing animals on day of show.**

Classes:

- SW10. Purebred Market Barrows
- SW11. Crossbred Market Barrows
- SW12. Crossbred Market Gilts

Division C - Swine Showmanship

July 16 @ Swine Arena

- All exhibitors are invited to participate. Additions or changes must be done at check-in on Monday, July 15.
- Judging will be held on Tuesday, July 16 at approximately 5:00 PM in the Swine Arena. The class winners will show for division champions, followed

by the Overall Champion showman selection.

- Breeding gilts may not be used for Market Showmanship. Exhibitors must show their own animal.
- Participants must use own market projects in order to participate in market showmanship.
- Showmanship will be broken into four divisions. Class winners will compete for top 5 overall.

Classes:

- Grades are determined by grade just completed.
- SW13. Senior Showmanship - grades 10-12
- SW14. Intermediate Showmanship - grades 7-9
- SW15. Junior Showmanship – grades 4-6
- SW16. Beginner – grade 3 only

JR. FAIR LIVESTOCK SALE RULES

General

- All market project exhibitors must declare destination (either home or sale) at the Fair weigh-in. This destination cannot be changed unless the exhibitor has a Champion or Reserve project which is mandatory sale.
- Top five in each species will be recognized during market shows. Placings in market shows determine sale order.
- To qualify for a premium, an exhibitor must exhibit the breeding project at the Fair.
- Where applicable, any market animal (excluding feeders) participating in the Junior Fair Sale will

Our Services

<p>Remodeling & Renovations</p> <p>Laminate & Hardwood Flooring</p> <p>Foundations (New & Repairs)</p> <p>Kitchen & Bathroom</p> <p>Room Additions</p> <p>Painting</p> <p>Windows</p> <p>Drywall</p> <p>Doors</p> <p>Trim</p> <p>Tile</p>	<p>Garages & Sheds</p> <p>Decks, Patios & Porches</p> <p>Specialty Work</p> <p>Floor Joists & Sub Floors</p> <p>Permits & Drawing</p> <p>Beam Repairs</p> <p>Excavation</p> <p>Consultant</p> <p>Siding</p> <p>Insurance Work</p>
---	---

Contact Us

ccinnovations@yahoo.com
 740-606-6446
 www.ccinnovationscompany.com

Why Us?

**35+ years
of business**

**Licensed,
Bonded and
Insured**

go on the truck. There will be no locker animals or change of ownership for those animals. All locker animals or change of ownership should be declared as "going home" at the species weigh-in.

- There shall be no other scales used in any of the livestock areas other than the official fair scales. Scales should not be brought on the fairgrounds. Anyone found in violation of weighing their market animals with other scales than the official scales at weigh-in will be disqualified from participation in the fair with that species of livestock.
- EXHIBITORS ARE LIMITED TO SELLING 1 ANIMAL.
- All Champions and Reserve Champions must sell through the Junior Fair Livestock Sales and are terminal (Feeders are not terminal).
- The Exhibitor with a Grand or Reserve Grand champion will have the right of refusal of carcass before offering it for sale from the locker.
- Any exhibitor winning 2 or more champions after selling a species through the sale that was a non-Champion will be required to forfeit the non-Champion money over market price.
- Where applicable, livestock sold through the Fayette County Junior Fair Sale are terminal and ineligible to be shown at any other Junior Fair Show including the Ohio State Fair.
- Any animal shown in an over/under weight class is not eligible to sell in the premium sale. These animals may be placed on the truck to receive market price, or return home. The decision to sell or take the animal home or go on the truck must be made at weigh-in.
- The order of species participating in the sale can be found on the Junior Fair Schedule page under the day of the sale.
- The Fayette County Fair Boards shall have the right to require 1st through 5th placings in each class of animals, or any other suspected animal, to be subject to random examinations or tests as prescribed by the Boards to determine if a substance has been administered to the animal to change the conformation or temperament of the animal.

SWINE

- The sale will be held on Thursday evening starting at 5:30 PM.
- Where applicable, all Junior Fair exhibitors have the option of taking their animal home (unless it is Overall Grand or Reserve Champion), placing it on the truck to receive market price, or selling it through the ring. All animals sold through the ring will be terminal. No locker animals or change of ownership can occur with those animals wishing to participate in the premium sale.

SHEEP

- The lamb sale will be held on Thursday evening starting at 5:30 PM. The sale order will be determined by overall placing of market lambs. All exhibitors with unsold lambs at the fair must dispose of the lambs on their own. These lambs will be released on Friday at 10:00 PM.
- Exhibitors having lambs weighing less than 90 lbs. forfeit their right to sell the lamb through the sale and show that lamb for Grand or Reserve

Champion in the market lamb show.

- All lambs choosing to participate in the premium sale will be terminal. There will be no locker animals or change of ownership.

MARKET BEEF

- The sale will be held on Thursday starting at 5:30 PM.
- Sale order will be determined by class placing.
- All animals weighing 1000 lbs. or more are eligible for sale.
- Those animals going home may be released on Friday at 10:00 PM.
- Exhibitors are permitted to sell one project through the ring.
- Where applicable, all animals participating in the premium sale will be terminal.

GOATS

- All market goats weighing 55 lbs. or more will be eligible to sell in the sale. The market goat sale will be held on Friday evening starting at 5:30 PM.

FEEDERS

- Calves must weight 300 – 750 lbs. to sell. The sale will be Thursday evening starting at 5:30 PM. The feeder sale is not terminal. Any feeder may be purchased from the ring and taken home. The buyer will pay the premium bid and market price for the calf. The exhibitor may: take their calf home, place the calf on the truck for market price, place their calf in the premium sale and have the calf go on the truck for market price, or place the calf in the premium sale and have the calf go home. Calves going through the sale and going home will be identified on the sale bill as having no market price.

RABBITS

- The sale will be on Friday evening starting at 5:30 PM. All meat pens of 2 rabbits must weigh between 4 and 6 lbs. and under 95 days of age in order to sell in the Junior Fair Livestock Sale. Any rabbit weighing less than 4 lbs. and over 6 lbs. disqualifies the pen from selling in the sale or competing for Champion or Reserve Champion.

CHICKENS

- The sale will be held at on Friday evening starting at 5:30 PM. All meat pens of 3 chickens must weigh between 5 and 7 pounds and be under 7 weeks of age in order to sell in the poultry sale. Any pen of 3 with an individual weighing less than 5 pounds or more than 7 pounds disqualifies the pen from selling or competing for champion or reserve champion.

TURKEYS

- The sale will be held Friday evening starting at 5:30 PM. Turkeys must weigh between 30 and 45 pounds to sell.

TESTING FOR DRUGS

- The Fayette County Fair Board shall have the right to require 1st through 5th placings in each class of animals, or any other suspected animal, to be subject to random examinations or tests as prescribed by the Board to determine if a substance has been administered to the animal to change the conformation or temperament of the animal.

2024 FAYETTE COUNTY FAIRBOOK UPDATES (as of 4/4/24)

Showmanship:

All Showmanship sign-ups will be done in the species barns. Exceptions are Dog and Horse as the classes are part of FairEntry registration.

Exhibitors do not have to register in FairEntry for Showmanship if noted in the 2024 Fayette County Fairbook (exception Dog and Horse classes).



EID tags must remain on the animals as it is a federal offense if removed.

Each animal is to be drug free at the fair and must cross the Fayette County Agricultural Society scales.



LIVESTOCK SALE RULE CHANGE:

The Exhibitor with a Grand or Reserve Grand Champion will have the right of refusal of carcass before offering it for sale from the locker.



REMINDER OF LIVESTOCK SALE ORDER FOR 2024:

Thursday, July 18—Sheep, Hogs, Dairy Feeder, Dairy Steer, Beef Steer, Beef Feeder

Friday, July 19—Chicken, Dairy Goat, Meat Goat, Turkey, Rabbit

Bidder numbers will be available at 4:30 PM each day at the Sales Office, Sales Arena.
The Jr. Fair Livestock sale will begin at 5:30 each day.



FAYETTE COUNTY Republicans

Working Hard for YOU

J.D. VANCE
US Senator

MIKE CAREY
US Representative

BOB PETERSON
*State Senator
91st District*

SHANE WILKIN
*State Representative
17th District*

BRAD WENSTRUP
*State Representative
2nd District*



TONY ANDERSON
Commissioner

DAN DEAN
Commissioner

JIM GARLAND
Commissioner

BRENDA MOSSBARGER
Auditor

KIM COIL-BUTLER
Recorder

PENNY PATTON
Treasurer

SANDY WILSON
Clerk of Courts

VERNON STANFORTH
Sheriff

JESS WEADE
Prosecuting Attorney

JASON LITTLE
Engineer

JUDGE DAVID BENDER

JUDGE MARY KING

**JUDGE SUSAN
WOLLSCHIED**

Paid for by Val McKinney
331 Fountain Avenue, Washington C.H., OH 43160

THANK YOU 2023 JR. FAIR BUYERS

2017 Fayette County Fair Queen Marissa Sheets
 2023 Dairy Princess Alora Self
 2023 Fayette County Fair Queen Emma See
 38 Rabbitry
 4-H Fun Bunch
 A&A Property Maintenance
 A-One Building
 Abbi Pettit-2019 Fair Queen
 Adena Family Med - Emily Jackson, CNP
 Adena Health Systems - Marketing Dept
 Affordable Auto Sales
 Ag Consultants Inc.
 Ag-Pro
 Alex Marting Weade LLC
 Alexis and Charlie Hiser
 Alpha Omega Plumbing
 Altered Sounds
 Aluminum Works
 Amber & Kyle Smith
 Anderson Equipment
 Area Heating & Cooling
 Armintrout Farms
 Ashley Casto -Touchstone Crystal Jewelry Consultant
 Atomic Credit Union
 Aubrey Schwartz - 2020 Fayette County Fair Queen
 Ault Building
 Austin Boedeker
 Bad to the Bone DJ+Karaoke Service DJ Bones
 Bane-Welker Equipment
 Barker Tire
 Barker's Towing/Recovery
 Beck's Hybrid
 Beck's Stegbauer Seed Sales
 Beekman Farms
 Ben and Melissa Havens
 Bennett Barnyard
 Bennett Brother's Salvage
 Berger Construction
 BGR
 Bihl Farms
 Billy & Jeannine Whiteside
 Bluegrass Farms of Ohio
 Bob Peterson State Senate
 Bob Steele Auctioneer
 Bobcat of Dayton
 Bonham Bros. Club Lambs
 Bower Family Farms LLC
 Brace Place Orthodontics
 Brad Reisinger Bane-Welker Equipment
 Brad Woodruff
 Brandt Club Lambs
 Branen Weade Realtor
 Branson Huff & Family Farms
 Brenda Hughes-Weade Realtor & Auctioneers
 Brenda Mossbarger
 Brenda Mossbarger Fayette County Auditor
 Brian Reeves Crop Insurance
 Broken Arrow Ag LLC
 Bryan Cockerill Family
 Bryan McCoy Family
 Bryan Sheets Family
 Bryant Ag Enterprises
 Buckeye Illini Genetics
 Buckeye Metal
 Buckeye Propane
 Buckskin Ag Fencing
 Bumpus Trucking
 Butcher Block London

C&M Farm Drainage
 C. Cottrill Channel Seeds
 Campbell Cattle
 Carl Conrad Inc.
 Carol Cramer
 Carson Farmhouse Favorites
 Carter Rabbitry
 Catawba Acres - Nathan & Melissa Steele
 Cherry Bend Pheasant Farm
 Chief Jason Lawless
 Chiropractic Health Care
 Christy's Daycare
 Clinton & Lindsey Worley
 Clinton Electric & Plumbing
 Co-Alliance
 Cockerill Elite Ag Sales LLC
 Cockerill Meat Goats-Rhett
 Concord Township Trustees
 Conserve Concrete Construction Services
 Corey Hoppes and Family
 Corteva Agrisciences - Pioneer Seeds
 Country Dogs Day Spa
 Craig & Shannon Butts
 Craig Cattle Company
 Craig Wilson & Brooke Abraham CNP
 CRC Boer Goats
 CS Titles
 CT Electric
 Cummings Farms
 Custom Cabs & Trailers
 Dakota Scott
 Dan Dean-Fayette County Commissioner
 Daniel Ryan Charles Hiser
 David L. Campbell Insurance
 Dawn Finch- Realtor
 DB Yummers
 Debbie Harris
 Dick Shipley
 Dill Family Farms
 Domtar Paper Company
 Double Cinco Livestock
 Doug and Jenny Coe
 Doug Marine's All Brands Sales Leasing & Rental
 Downing Ag Logistics
 DSC Produce Farms
 Duff Farms
 E Z OIL CHANGE
 Eagles Lodge
 Ed & Bunny Bradshaw Family
 Edward & Megan Kunka Farms
 Erik Marting Tax Services
 Evan and Hannah Schaefer
 Ewesful Acres
 Faith Cottrill-Marine
 Family Farm & Home
 Fannin Farms
 Faris Insurance
 Farm Credit Service
 Fayette County Meat Goat Association
 Fayette Co. Pork Producers
 Fayette County Democrats
 Fayette County Fair Supporters
 Fayette County Jr. Cattleman
 Fayette County Republican Party
 Fayette County Softball League
 Fayette Pharmacy
 Fayette Veterinary Hospital
 Fifth Third Bank

THANK YOU 2023 JR. FAIR BUYERS

First State Bank
 Four Seasons Nurse & Rehab
 Garel Armintrout
 Garman Feed and Supply
 Gary & Skeet Butts
 Gary Green
 Gary L. Benson Trucking LLC
 George Stables & Showplace Gallery Furniture
 Gill Dairy
 Ginna Climer 2015-2016 Amss. Queen
 GL Pettit LLC Pettit's Stores
 Gordon CDJR
 Grandma Judy Justice
 Grandview Acres Farms
 Grant & Marissa Ratliff
 Great American Jewelry - WCH
 Greenfield Corner Pharmacy
 Greenfield Vet Clinic - Dr. Hannah Jarvis
 Greg & Marilyn Miller
 Gustin Seed Services
 Harold's Equipment
 Harry's Heating & Cooling
 Hartley Oil
 Havens Family Landscaping
 Hill Construction
 Hills Supply Inc.
 Hines Farming
 Hired Guns Racing Stable
 Honeybee Homestead
 Hoppes Farms
 Huntington National Bank
 In Memory of Jim & Marilyn Sever
 In Memory of Roger Bonham
 J and B Bennett Salvage
 J & E Kunka Farms
 J & S Home Rehabs, LLC
 Jeffersonville Masonic Lodge #468
 J. Weade Prosecuting Attorney
 J. K. PreCast
 J. R. & Nicole Cook
 J. Reed Concrete and Construction
 Jackie Trimble
 Janett Carpenter
 Jason & Whitney Gentry
 Jason Duff Construction
 Jason Funderburg
 Jay Car Construction
 JBH Crane, Grain and Firearms
 JD Sears Farm
 Jean Barger Rice Trust
 Jeff and Josh Wilt Spots
 Jeff Athletic Association
 Jeffersonville Fire Department
 Jeffersonville Lion's Club
 Jeffersonville Market
 Jennarations Hair & Nail
 Jerry Begin
 Jill's Farmhouse Catering
 Jim Garland
 Jim Worley & Family
 Joanne Mayer in Memorial
 Jody & Melanie Langley
 Joe Garland Dekalb/Asgrow
 John Bloom Trucking
 John Gruber
 John Hinderer Chrysler Dodge Jeep Ram
 John Hinderer Ford
 John Hinderer Honda

John Hinderer Honda Power Store
 Jones Farm Market
 Josh and Heather Pitstick
 JT, Kayla, Johnny & Lucille Jones
 Judge Beathard & Family
 Judge Vic Pontious
 Junk & Junk Attorney
 K R Auto Sales
 K & S Concrete
 Kayla Jones & Alexander-Gerber Crop Insurance
 KD Miller Trucking
 Keath Causey
 Keller Ag
 Kenneth Ward
 Kim Leach
 Kinnison Farms
 Kirk Farms Aggregate Division
 Kirk Nichols Farms/Stable
 Kirkpatrick Family Farm
 Kirkpatrick Funeral Home
 Knecht Farms
 Kopp Land & Livestock
 Kris and Alex Robinette and Family
 Kristina Morgan & Amanda Hockensmith
 Lainie Weade 1967 Lamb Queen
 Larrick Construction & Excavating
 Laura Jones, Key Realty
 LCNB National Bank
 Leist Mercantile
 Leisure Heating & Cooling
 Lester & Ruby Beers
 Libby Aleshire 2022 Fayette County Fair Queen
 Lindsey Farms
 Lisa & Tim Kenney
 Lisa Thompson
 Lone Mountain Aircraft
 Luke and Mallory Bihl
 M & M Fasteners
 M & M Farms
 Mark & Linda Hiser
 Martha Cook
 MaryBelle Cockerill
 Master Refrigeration
 Matt Jackson Trucking
 Matt Leisure Trucking
 Max Hughes
 May Family Show Pigs
 Mayer Farm Equipment
 McDonald & Son Feed
 ME Logistics
 Mean Jeans Salon
 Melinda & Bill Blaney
 Melissa Upthegrove Law
 Melvin & Kathy Stickle
 Melvin Stone
 Merchants Bank Greenfield
 Merchants Bank of WCH
 Michael Black
 Midland Acres Inc.
 Mihalic Associates & Auctioneers
 Mike & Beth Ferguson
 Mike & Tammy Lower
 Mike Carey for Congress
 Mike King LCK Farms LLC
 Mike Smith
 Miller Family
 Miller Farm Partnership
 Miller Grain

THANK YOU 2023 JR. FAIR BUYERS

Montgomery Insurance & Investments
 Morgan Family
 Mossy Oak Properties
 Mowery Farms
 MT MG Properties
 Mugs & Jugs
 Nadine Fogt
 Nancy LeBeau
 Nate Warner
 Nathan & Grace Miller
 Neff Home Improvements
 Nic & Erika Miller
 Noriega Family
 North Star Meats
 Nutrien Ag Solutions
 O+L Farms
 OK Tire Service
 Out of the Ashes David and Vicki Climer Jr
 Outside The Box
 Pamela Funderburg
 Parrett Insurance
 Parrish Trucks & Towing
 Pavay's Towing
 Payton Family
 Pioneer--August Knecht
 Point Broadband
 Precision Ag
 Prime Meats
 Progressive Edge Eric Tipton
 Quali-Tee Design Sportswear
 Quality Paving
 R. D. Holder Oil Co.
 Ralph Bloom Trucking
 Ranchers Roast Beef
 Ray Mick, CNP
 Real McCoy Genetics
 Regan's Greenhouse At the Farm LLC
 Reiterman Seed/Feed & Supply
 Richard & Sara Davidson
 Ricketts Farm Inc.
 Riley Family Show Cattle
 Riley Tax & Accounting
 Ritenour Farms
 Roberts Funeral Home
 Robin & Brian Webb
 Robin's Nest
 Rolfe Farms
 Roller Haven
 Ronda Turner ERA Real Estate
 Rusty Keg Tavern
 Rutherford Club Lambs
 Sandra I. Wilson Clerk of Courts
 Sara's Sweets & Treats
 Schaefer Family Farms
 Scott Evans Family
 Seaburn Farms
 Seed Consultants Inc.
 Seven6 Ag Pivot Bio
 Sexten Farms
 Shane McMahon State Farm
 Shannon Harper Davis
 Shannon Ward Szczerbiak and Family
 Sharp Construction
 Shawn Long AgroEco Power
 Sheriff Vernon Stanforth
 Showpig.com
 Simplot Growers Solution

Skyline Material Sales LLC
 Skyline Roofing & Construction
 Smith Construction
 Smitty's Tavern
 Stephanie Dunham - Key Realty
 Sterling Bluegrass Jamboree
 Steve Eckstein Attorney
 Steve Leubbe County Engineer
 Stine Seed Company
 Stoughton Farms
 Streitenberger Family
 Sugarcreek Packing
 Summers Funeral Home
 Sunrise Co-Op
 Susan Wollsheif Attorney
 Susanna Eckstein 2017 Fair Attendant
 SVG GM Toyota
 Tammy Myers, Key Realty
 Taylor Plumbing
 Team Bihl
 The Farmer's Pantry
 The Gathering Place Church
 The Guest House Spa
 The Olde Farmstead
 The Ranch of Opportunity/ Eastway Corp
 The Razors Edge Salon
 The Shannon Family
 The Stuckey Firm
 The Wendt Group
 The Wendt Group-Wesley Black
 Thomas Farms
 Thunder Creek Cattle Co.
 Tina Brizius
 Tony & Ethel Wood
 Tony Anderson Commissioner
 Tony's Welding
 Tori Wehner
 Tracy Mallott
 Train Station Meats & Market LLC
 Trevor Pursell
 Trey Uetrecht Becks Seed Sales
 Tri Creek Acres "Hughes Kids"
 Tyler Kingery Construction
 UCS
 Vallery + Dorn Insurance
 Vallery Crop Insurance
 Varsity Calendar
 VFW 8041 New Holland
 VFW Post # 3762
 W. A. Hodson Inc.
 Walker Farms
 Wall Dentistry
 Wayne Arnold
 WD Club Lambs
 WDC Group
 Weade Law Office
 Weade Realty & Auctioneer
 Whitney Grain & Cattle LLC
 Willow Restaurant
 Wilt Family Show Cattle
 Wilt Farms & Property Maintenance
 Wingate Packaging
 Woody's Cafe
 Wyatt Insurance Group



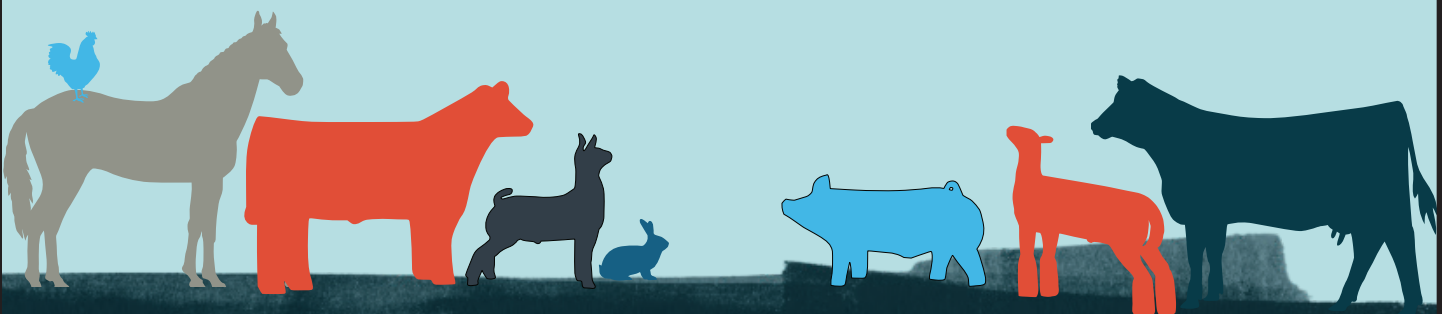
First State Bank

Built on Belief

**Wishing all exhibitors a
great week at the fair!**

543 Clinton Avenue | WCH

740.335.3771



fsb4me.com

Member FDIC

MNB Merchants National Bank

A REAL COMMUNITY BANK

Local People / Local Decisions / Local Commitment



128 South North Street, Washington Court House
(740) 335-1331



merchantsnat.com

OTHER BRANCH LOCATIONS:

- HILLSBORO
- LONDON
- SPRINGFIELD
- GEORGETOWN
- WILMINGTON
- ATHENS
- GREENFIELD
- MOUNT ORAB
- BATAVIA
- MARYSVILLE
- LOGAN

